

BERRY  ALLOC

spirit.



Installation manual.
Pro 55 Click Comfort tiles.

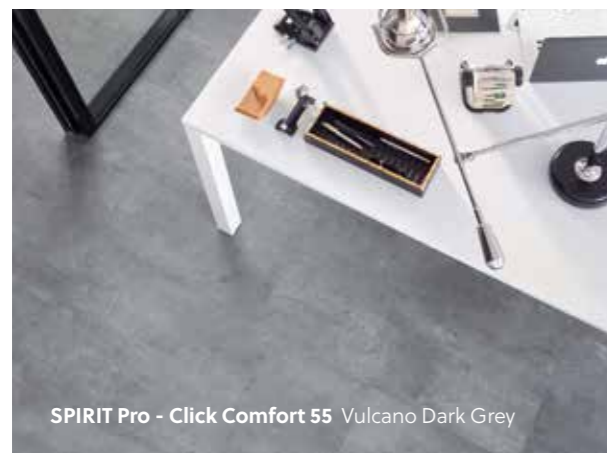
01. Precautions.

– be aware of the following

usage

SPIRIT PRO 55 CLICK COMFORT TILES is flooring exclusively designed for **residential and commercial indoor usage** (shops, hotel rooms, etc.) Spirit should be installed in areas where the room temperature fluctuates between 10 and 35°C. The largest recommended installation area is 15mx15m. For larger areas, an expansion profile must be used. Spirit is not suitable for outdoor use and verandas/wintergartens.

The installation of the floor must be the final operation in the project, to avoid it being damaged in any way by other work. Always use dedicated and recommended accessories provided by BerryAlloc so as not to void the warranty and to achieve the best results. Accessories from foreign suppliers may not provide compatible quality or functions.



transport & acclimatisation

Transport the SPIRIT boxes carefully on a flat surface. Never store the boxes upright. Keep the product in the box while acclimatising, in small neat piles, max. 5 boxes high. Store the boxes inside at the temperature conditions close to those of the planned usage (18-25°C). Do not leave the boxes in very cold, very warm or humid places. **It is important to store the boxes closed with tiles for at least 48 hours at a constant room temperature (18-25°C) before installation.** This temperature should be maintained throughout the installation and for at least 24 hours after installation. Temperature fluctuation during installation will make the process more difficult.



The installation of the floor must be the final operation in the project!

underfloor heating

These products are compatible with underfloor heating, provided that the temperature on the surface of the floor covering does not exceed 27°C. **Only underfloor heating systems with heating components –hot water or electric– embedded in the screed /substrate are suitable.** Heating films or other “new” systems that are placed ON the subfloor are not suitable. With electrical underfloor heating, we recommend not exceeding 60W/m².

underfloor cooling

These products **can also be installed over floor cooling systems.** However, the supply temperature of the cooling water must not be reduced to below the dew point temperature. If the temperature goes below this dew point, then condensation can cause damage to the floor. Thermostats in the room must never be set at a temperature that is more than 5°C lower than the room temperature



02. Prepare the subfloor.

Careful subfloor preparation is essential for an excellent result. Roughness or unevenness in the subfloor (more than 3 mm per linear m) may telegraph through the new floor, resulting in an unsightly surface and causing excessive wear on high spots or indentation on lower spots.

In any case, the subfloor must be clean, flat, dry and stable. Remove all traces of plaster, paint, glue, oil, grease, debris (including nails) etc. and vacuum.

Remove textile floor coverings (such as carpet, needle felts, etc.) The products **can be installed on top of concrete, tiles, wood and most existing hard surface floor coverings**, provided that the subfloor is smooth, dry, clean and stable. If there is any moisture present, carry out sealing before installation. Excessive moisture can

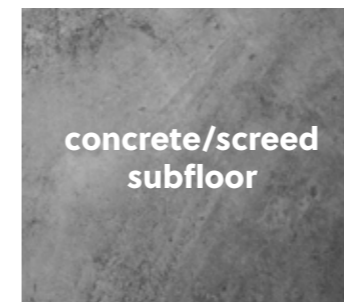
generate mould or fungus. Make sure floor level deviation is a maximum of 3 mm per linear m, and 2 mm per 20 linear cm. If these margins are exceeded, the subfloor must be evened out with a suitable filler or levelling compound.

If you are not certain about the quality or suitability of your subfloor, then contact your dealer, who will be more than happy to help you.

The subfloor must be clean, flat, dry and stable.



Specific preparation depending on the type of subfloor:

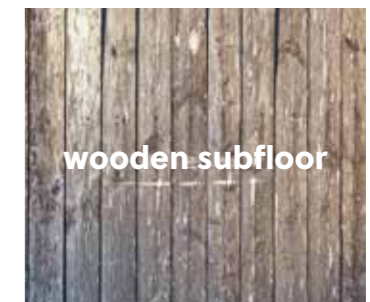


Let new concrete dry sufficiently. The moisture content of the subfloor must be less than 75% RH at min. 20°C. Max 2% CM for cement and 0.5% for anhydrite.

Where there is underfloor heating, the moisture content should be less than 1.8 CM%, and 0.3 CM% for anhydrite. Always record and keep your moisture content results.



Check the subfloor for moisture problems. The joints of the new floor covering should never be aligned with the underlying tile joints. It is not necessary to fill the grouts of a subfloor comprised of ceramic tiles with joints when these do not exceed 5 mm in width. Bear in mind that some ceramic tiles may show rising edges/corners although the main level may be correct. These parts may telegraph through the floor covering in the future.



Check the floor for insect infestations. Make sure the subfloor is levelled and screw down any loose sections firmly. Wooden subfloors should always have access to air and should be ventilated at the edges. If there is any moisture in the wood-based subfloor or there is no proper moisture barrier below the wood-based subfloor, it must be removed first.

underlay not needed

As SPIRIT PRO 55 CLCF tiles are pad-attached products, no additional underlay is needed or recommended.

03. Installation.

tools:

- trimming knife
- pencil
- T-square
- measurer
- spacers (wedges)

Saw/guillotine might allow for faster work. Wear gloves to protect your hands when cutting the planks.

Make sure identical batches are used, at least for every individual room/part.



Check all tiles for visible defects in optimal light conditions, both before and during installation. Tiles with defects must not be used. Make sure that you mix panels from different boxes, in order to minimise shade variations. This will ensure a more natural looking floor. Do not install damaged tiles. During installation, inspect the groove area and remove any debris that may prevent the proper assembly of the tiles. On the short sides, check to ensure the clip is well inserted into the plank/tile (see picture)

SPIRIT PRO 55 CLCF should be installed so that they are 'floating'. This means that there should be sufficient space (8 mm) between the floor and all walls or any fixed objects, so that the floor can move in any direction, i.e. it should not be screwed or nailed down to the subfloor. Kitchen cabinets may not be installed on top of any floating floor.

Prior to installation, decide in which direction you want to install the tiles. Measure the room carefully to create a balanced layout and determine whether the first row should be narrowed or not. If it is not necessary to cut the first row, then the lower groove lip of the first row needs to be removed. If the first row needs to be cut lengthwise, make sure that the minimum width is no less than 5 cm. Cut boards with a Stanley knife, decor side up.

Start with the installation of the floor in the corner of the room on your left hand side as you are looking at the wall. **Always work from left to right** and with the tongue facing towards you.

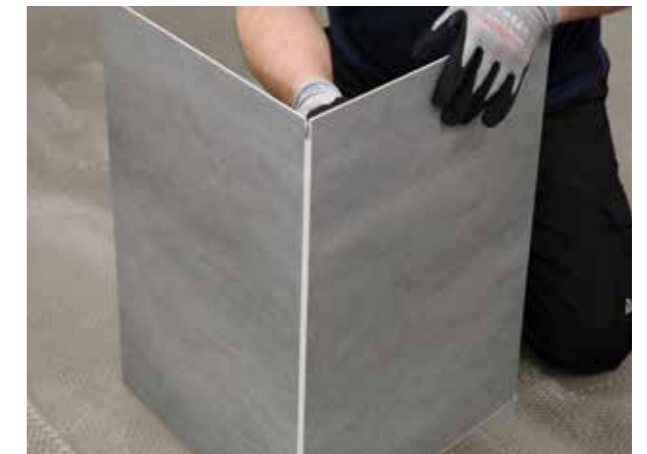
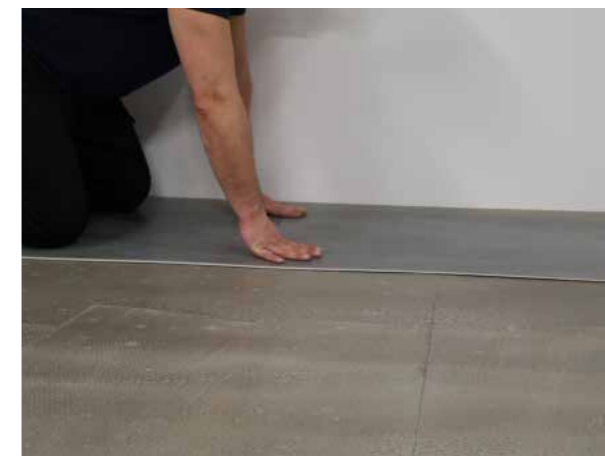
installation of the first row

Place 8 mm spacers between the short and long sides of the tiles and the wall. Always position one spacer between the wall and where the tiles join.

The end joints of the tiles in the first row are assembled by inserting the tongue side into the groove side of the previous tile at a low angle. Gradually lower the tile down flat until the end joint closes, ensuring that the tiles are perfectly aligned. Install the remaining full tiles in the first row.

The last tile in the first row will need to be cut. Measure the distance between the wall and the surface of the last full plank/tile. Subtract 8 mm from this measurement to allow for the spacer. If this measurement is less than 30 cm, the first tile in the row should be cut. The first and last tile in each row should be at least 30 cm in length. Tiles are cut using a sharp utility knife and a square. Score the surface of the tile with the knife and snap the tile at the score line.

The remaining piece cut off from the last tile in the first row may serve as the first tile in the second row provided it is at least 30 cm long. Always stagger the end joints from row to row, a minimum of 30 cm apart.



installation of the second row

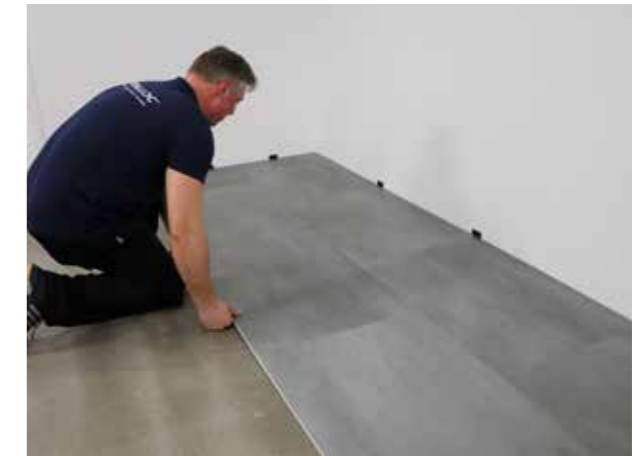
Install the long side of the first tile of the second row. Place an 8-mm spacer between the wall and the short side of the tile. Insert the tongue side into the groove side of the tile from the previous row at a low angle and lower it flat onto the substrate.

Install the second tile of the second row. Position the long side of the tile with the tongue side; fully engage it into the receiver of the first row of the product. Lower the tile with firm pressure onto the floor, ensuring that the end joint is overlapping and perfectly aligned: push the end joint downward until the end of the tile snaps into place.

Continue installing the tiles in the second row. It is important to make sure that the first two rows are straight and square, as they affect the entire installation.

next rows

Continue working from left to right, row by row. Be sure to maintain an 8-mm space around all walls and vertical objects. To maintain a random appearance, remember to offset the end joints a minimum of 30 cm apart.



expansion profiles

Expansion profiles are needed when single rooms are **larger than 15 m by 15 m**. In rooms that are extremely long and narrow, **expansion profiles** are also required. Do not exceed a length of 15 m. Expansion profiles are also needed under door openings and between separate subfloor heating circles.



04. Finishing your floor.

To give your floor the finishing touch, use our accessories: skirtings and profiles. Always keep the expansion gap in mind when installing your accessories.

Never attach skirting boards directly onto the installed floor. Permanent sealing products (acrylic or silicone) should never be used to seal up the gap between the floor covering and skirting boards/profiles. Joints on fixed building elements (door frames, heating pipes, etc.) should never be completely sealed with elastic filler. You should use filler twine as a basis for filling expansion joints. Profiles, doorstops and suchlike should not be

screwed through the floor covering into the subfloor.

For door mouldings, lay a panel face down next to the door moulding. Saw the panel then slide the plank under the moulding.

Consider saving a few planks for any potential future repairs.



05. Maintain your floor.

doormats - soft, non-rubber casters - felt pads

To keep your floor in good condition, it is important to place non-rubber backed doormats at all entrances, to prevent dirt or grit on your floor. The use of doormats will eliminate abrasive particles driven by footwear and will reduce damage. Do not use rubber-backed mats, as long-lasting contact with rubber can cause permanent discolouration. Never place doormats on a wet floor.

Rolling office chairs, furniture legs, fitness appliances, etc. should be fitted with soft, non-rubber casters, to avoid permanent damage to your floor. Use a suitable desk mat.

We recommend the use of felt pads or protective feet for items that contain rubber, such as chair legs, furniture legs, fitness appliances, etc. Use specific protection under heavy/sharp furniture to avoid indentation.

NB: the floor can become more slippery when is wet. Spots, marks and spillages should be wiped up as soon as possible. Do not use chlorinated solvents. Never use wax or varnish coating. Never use maintenance products that contain wax or oil. Never use a steam mop.

cleaning

Initial Cleaning

First remove all dirt and dust from the flooring with a brush or vacuum cleaner. Then clean with water and an appropriate neutral cleaning agent, at least twice and until the water stays clean. **We strongly recommend using BerryAlloc Vinyl Planks cleaning products.** Any other cleaning product may contain agents that damage resilient floor surfaces. The coating of the top-layer makes a specific treatment after installation unnecessary.

Regular cleaning instructions

Vacuum or wet mop. As required, use a solution of clean water and mild detergent or domestic floor cleaning emulsion. We strongly recommend using BerryAlloc Vinyl Planks cleaning products, as other products may damage your flooring surface. **Do not flood the floor or leave a puddle of water on the floor.** Rinse thoroughly and soak up residual water.



06. Warranty.



10 years
residential
warranty



25 years
residential
warranty

warranty for the first user

SPIRIT PRO 55 CLCF tiles are guaranteed under normal conditions of use against any manufacturing defects from their date of purchase by the original customer. This warranty covers all abnormal degradation of this product, provided that the planks & tiles are installed and maintained in accordance with the instructions provided. If the instructions cannot be found, you should consult the producer or distributor/retailer, or you should consult the manuals on the following website: www.berryalloc.com. This warranty covers the replacement of SPIRIT PRO 55 CLCF tiles determined as defective with equivalent or similar quality products existing at the time of the claim. This warranty does not involve a financial reimbursement under any circumstances, and is only provided for the replacement of material. Taking the obsolescence of the product into account, compensation will be offered at a flat rate proportional to the time elapsed and will only relate to the initial value of the floor covering in order to arrive at zero at the end of the warranty period.

SPIRIT PRO 55 CLCF and SPIRIT XL CLCF: 25-year residential warranty - 10-year commercial warranty.

exclusions of warranty coverage

- Wear and scratches from any source other than foot traffic. Wear is defined as complete removal of decor on an area larger than 2 cm².
- Any mechanical damage or other alteration caused by use that is not in line with the BerryAlloc installation instructions
- The occurrence of accidents, misuse or abuse
- Damage caused by using improper cleaning methods or unsuitable detergents
- Damage due to casters, heavy chairs or furniture: it is recommended that you use felt pads under chairs and furniture to reduce the possibility of surface scratching and marking
- Damage due to sand or grit: it is recommended that you use doormats on the inside and outside of all external doorways to prevent grit from being carried onto the floor
- Damage due to scratching. Diminished gloss is not considered wear.
- Installation of any other pattern than those described under the point "Installation"
- Damage due to moisture in the subfloor.
- Specifically excluded is damage from improper installation, alternative installation products, plumbing, appliance leaks, failure to protect the flooring from heat-generating appliances, stains or damage caused by heavy chairs or furnishings.



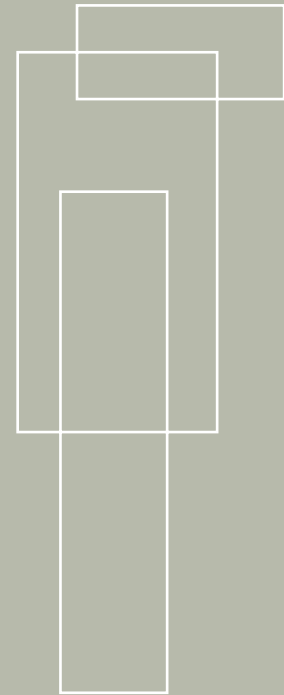
disclaimers to the warranty

These express limited warranties are in lieu of any other expressed or implied warranties. No one (including installers, distributors, retailers, representatives, employees, or agents) is authorised to assume for BerryAlloc NV (the "Company") any liability or responsibility with respect to the Company or modify the duties, disclaimers, scope, exclusions, or limitations of Company's warranties.

To the extent permitted by law, all warranties (expressed or implied) other than our limited warranties are disclaimed, including any warranty of merchantability or fitness for a particular purpose including acts of god/force majeure, acts of terrorism, damage caused by vermin or insect infestation, fire, flood, or any other act or circumstance beyond beauflor's reasonable control.

If any implied warranty arises under applicable law, any and all implied warranties (including any warranty of merchantability or fitness for a particular purpose) are limited in duration to the duration of this written warranty, to the extent allowed by law. The company disclaims and excludes any liability for lost profits, inconvenience, or any other indirect, special, or consequential damages. The replacement of affected flooring with similar style and colour is the full extent of beauflor's obligation under our limited warranties.

In no event shall the company be liable for indirect, special, consequential or incidental damages of any kind, irrespective of the cause. Some legal systems do not allow limitations or disclaimers as to implied warranties, so the above limitations or disclaimers may not apply to you. Some legal systems do not allow the exclusion or limitations of incidental or consequential damages, so the above limitations may not apply to you. Some legal systems do not allow limitations on the time an implied warranty lasts, so the above limitations may not apply to you. These limited warranties give you specific legal rights, and you may have other rights that vary from county to country.



legal information

This document presents the general installation instructions, based on the latest available information. For the best result, and to ensure the validity of the guarantee, these instructions should be followed carefully.

This document replaces all previous versions and is valid until further notice.

This information is a representation of the technical know-how at the time that this document was produced/published and may be amended, complemented or replaced at any time.

Please check the following website frequently for updates: www.berryalloc.com

Scan the QR code and view the online installation video for your floor.



↪ *For click
installation.*

BERRY  **ALLOC**

BerryAlloc

Industrielaan 100

8930 Menen – Belgium

T +32 56 67 66 11

info@berryalloc.com

berryalloc.com